

Posh Bristol MK2 Vanity Unit 750mm



Wall Hung Vanity



Freestanding Vanity

SPECIFICATIONS

Recommended use	Domestic, hotel, and commercial
Basin material	Vitreous china
Cabinet material	MDF (2 Pac polyurethane)
Colour availability	White
Taphole option	1 or 3 Taphole
Capacity	5.6 Litres
Integrated overflow	Yes
Plug and waste	32x40mm with overflow (not supplied)
Fixing	Top siliconed to cabinet, cabinet screwed back to wall NOTE: Fixings not supplied

To see the complete Posh range go to www.reece.com.au/bathrooms

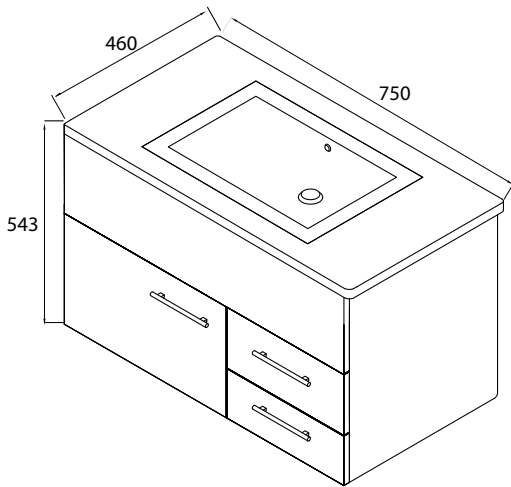
CLEANING RECOMMENDATIONS

We recommend the use of soapy water or approved cleaners.

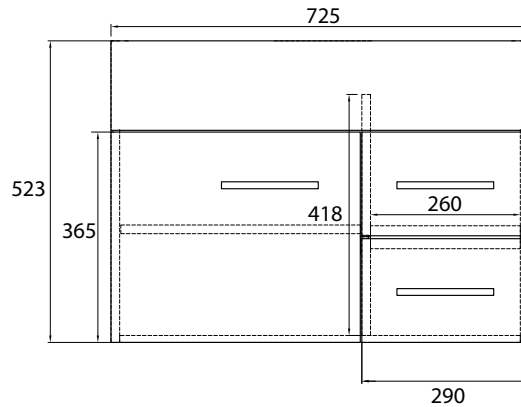
This product should not be cleaned with abrasive materials.

Damage caused by any improper treatment is not covered by the product warranty- refer to Warranty Conditions.

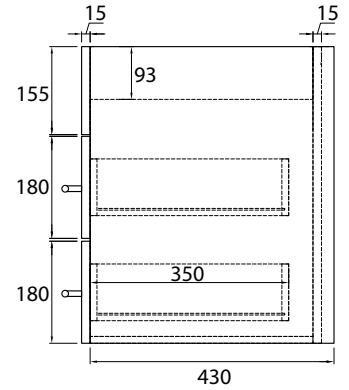
Posh Bristol MK2 Vanity Unit 750mm



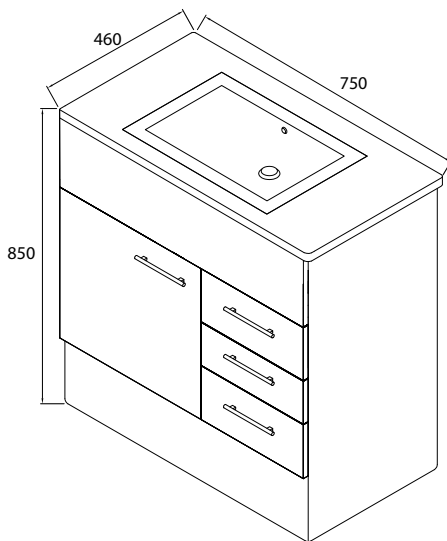
Wall Hung Vanity 750mm



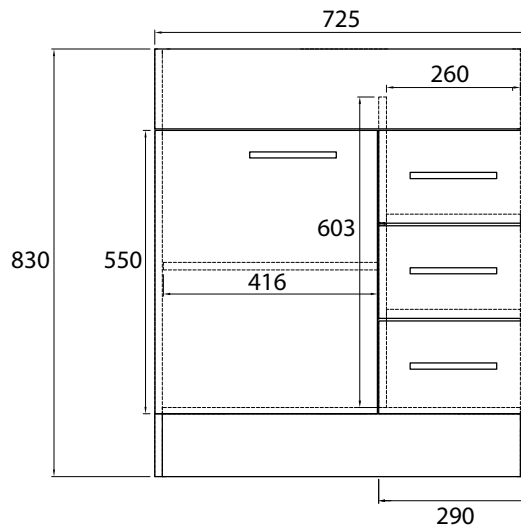
Cabinet Only - Front View



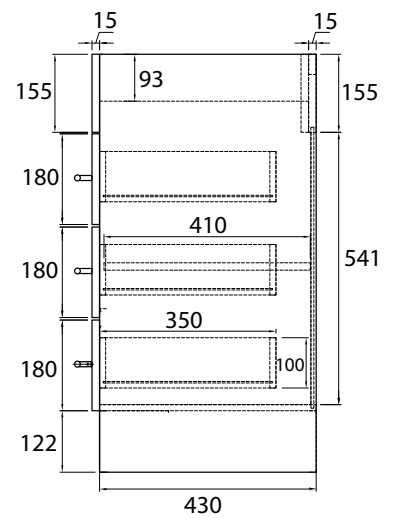
Cabinet Only - Side View



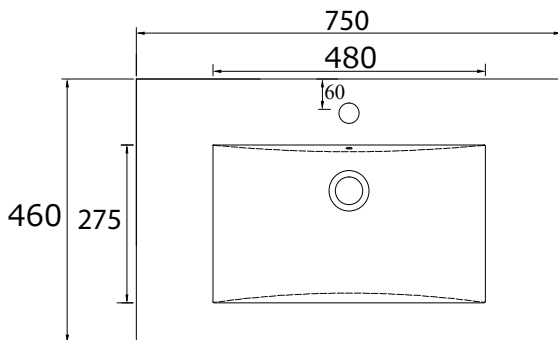
Freestanding Vanity 750mm



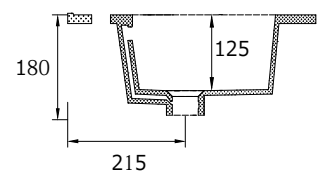
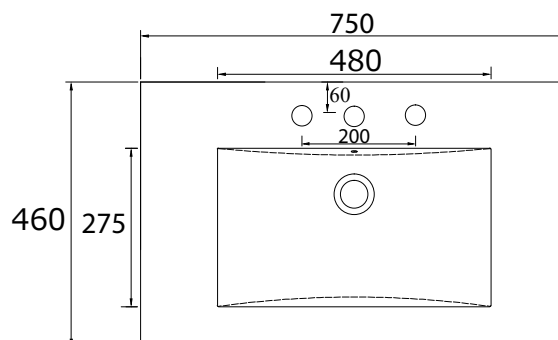
Cabinet Only - Front View



Cabinet Only - Side View



Top View



Side View