



Compressor  
Voltage Code : TZ

# TAG5553E

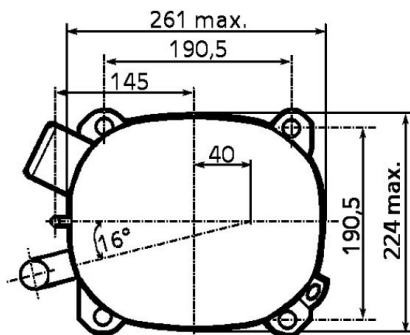
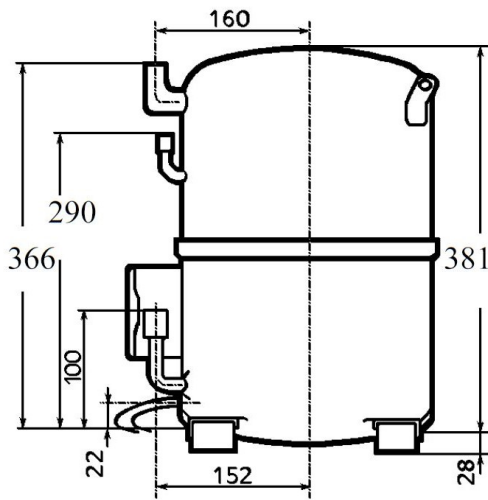
Air Conditioning & Heating (CA)

400V 3~ 50Hz / 440V 3~ 60 Hz

R22

AGB5553ETZ

Conditions	Frequency	Nominal Cooling Capacity		Sound Power ISO3745 / ISO 3743-1
		Watts	BTU/h	
EN12900 / R22	50 Hz / 60 Hz	11751 / 13832	40071 / 47167	77 dBA



<b>Displacement (cc)</b>	100.7
<b>Net Weight (Kg)</b>	43.5
<b>Oil Quantity (cc)</b>	1760.0
<b>Oil Type</b>	Mineral
<b>Expansion Device</b>	Capillary_Tube/Expansion_Valve
<b>Cooling</b>	Fan
<b>Main Winding (Ohm)</b>	3.6
<b>Current</b>	
RLA (A)	7.4   8
MCC (A)	12   12
LRA (A)	45   48
<b>Electrical Equipment</b>	TRI
<b>Overload</b>	Interne
<b>Refrigerating connection for OD</b>	
Suction Tube	22.2 (7/8")
Discharge Tube	12.7 (1/2")
Process Tube	6.35 (1/4")

\* EN12900 : T°Cond. 50.0°C / T°Evap. 5.0°C / T°Superheat. 10.0°C  
T°Subcooling. 0.0K

Certificates :



Note : Tecumseh reserves the right to change information contained in this document without notification.



**Tecumseh**

<b>TAG553E</b>	<b>Tension TZ : 400V 3~ 50Hz / 440V 3~ 60 Hz</b>
----------------	--

Les performances sont données dans les <b>conditions EN12900</b> :	Surchauffe :	10.0 K
Condition Dew	Sous refroidissement :	0.0 K
The performance data are in <b>EN12900 conditions</b> :	Superheat :	10.0 K
Dew Condition	Subcooling :	0.0 K

<b>50 Hz R22</b>											
											<b>N°337EL-T</b>
4   T condensation	5   T évaporation	(°C)	-25	-20	-15	-10	-5	0	5	10	15
<b>40</b>	1   P frigorifique	(Watt)				6789	8692	11085	13967	17341	21206
	2   P absorbée	(W)				2836	3122	3422	3737	4065	4408
	3   I absorbée	(A)				5.41	5.82	6.24	6.67	7.11	7.55
<b>50</b>	1   P frigorifique	(Watt)					7120	9215	11751	14728	18148
	2   P absorbée	(W)					3298	3697	4110	4535	4974
	3   I absorbée	(A)					6.02	6.61	7.20	7.81	8.42
<b>60</b>	1   P frigorifique	(Watt)						7429	9627	12216	15197
	2   P absorbée	(W)						3975	4484	5006	5540
	3   I absorbée	(A)						6.97	7.74	8.50	9.27

<b>60 Hz R22</b>											
											<b>N°337EL-T</b>
4   T condensation	5   T évaporation	(°C)	-25	-20	-15	-10	-5	0	5	10	15
<b>40</b>	1   P frigorifique	(Watt)				8070	10302	13092	16441	20351	24821
	2   P absorbée	(W)				3673	3996	4354	4748	5177	5641
	3   I absorbée	(A)				5.34	5.98	6.61	7.24	7.86	8.47
<b>50</b>	1   P frigorifique	(Watt)					8438	10884	13832	17284	21241
	2   P absorbée	(W)					4220	4704	5222	5774	6362
	3   I absorbée	(A)					6.18	7.00	7.81	8.63	9.44
<b>60</b>	1   P frigorifique	(Watt)						8774	11331	14335	17787
	2   P absorbée	(W)						5056	5697	6373	7082
	3   I absorbée	(A)						7.39	8.39	9.40	10.4

1 = cooling capacity 2 = power input 3 = current 4 = condensing temperature 5 = evaporating temperature

**Nota : Tecumseh se réserve le droit de modifier les informations contenues dans ce document sans préavis.**

**Note : Tecumseh reserves the right to change information contained in this document without notification.**

© 2020 Tecumseh Products Company  
All rights reserved