

STIEBEL ELTRON

reece

DHB ST Trend

Installer flexibility with three
hot water sizing options in one
little white box!



DHB ST Trend

3 PHASE ELECTRIC INSTANTANEOUS

Affordable high quality comfort

The DHB ST Trend delivers reliable hot water with precision. Its rotary selector allows stepless temperature control in 1 °C increments. With advanced 3i electronic technology, it ensures high efficiency and consistent performance.

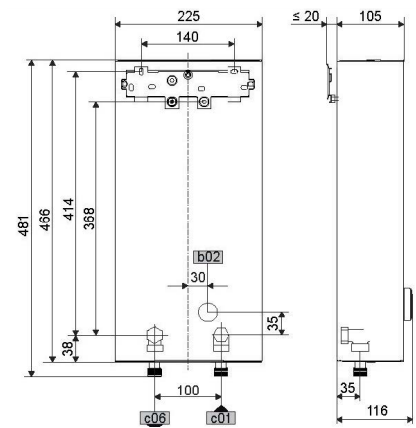
Product features

- › Made in Germany
- › Electronically controlled
- › Selectable power output
- › Rotary selector allows stepless temperature control in 1 °C
- › Suitable for hard and soft water areas
- › No flue, ventilation or safe tray required



Type		DHB ST Trend 50 AU	DHB ST Trend 60 AU
Article no.		208578	208579
Rated output (415 V)	kW	19.4/22.6/25.8	19.4/22.6/25.8
Rated current (415 V)	A	30.1/32.2/36.3	30.1/32.2/36.3
Connection		3/PE	3/PE
Fuse protection	A	32/32/40	32/32/40
Electrical installation		As per AS/NZS3000	
Installation requirements		AS/NZS3500.4.2 & local requirements	
Switch on flow rate	L/min	>2.5	>2.5
Temperature settings	°C	20-50	20-60
Water connection		G 1/2	G 1/2
Max. permissible pressure	kPa	1000	1000
Max. inlet temperature for reheating	°C	50	55
IP rating		IP 25	IP 25
Height	mm	466	466
Width	mm	225	225
Depth	mm	116	116
Weight	kg	2.9	2.9
Colour		White	White

Dimensions



Dimensions and Connections
In-wall or bottom entry connection available.

Calculating Output Water Temperature

Add the temperature rise values on the left to your incoming cold water temperature to calculate output at a desired flow rate.

Seasonal Average Cold Water Temperatures

- Melbourne: 15 °C
- Sydney/Brisbane/Perth/Adelaide: 18 °C
- Canberra/Hobart: 14 °C
- Townsville/Darwin: 25 °C

Temperature Rise at connected load (415V)	19.4 kW	22.6 kW	25.8 kW
6 L/min	+46°C	+52°C	+60°C
8 L/min	+34°C	+40°C	+45°C
10 L/min	+27°C	+32°C	+36°C
12 L/min	+23°C	+26°C	+30°C
14 L/min	+19°C	+22°C	+26°C

STIEBEL ELTRON is committed to our policy of continual improvement, some features may have subsequently been changed or even removed. Our advisors will be happy to consult with you regarding the currently applicable equipment features. The images used in this data sheet are for reference only.