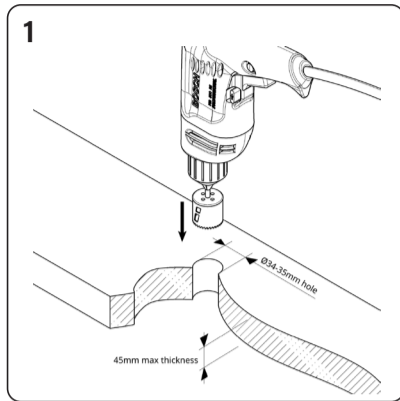


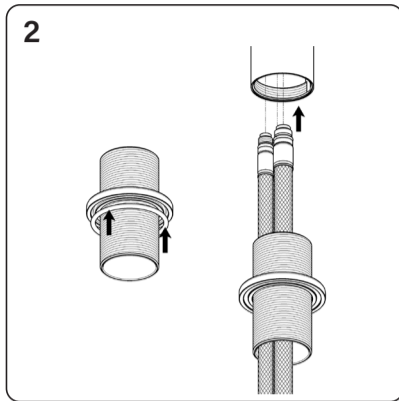


# VARA Gooseneck Mixer



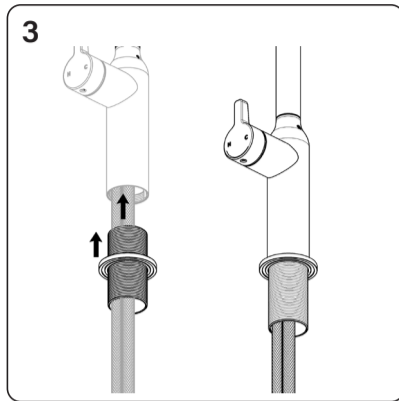
1 Drill Bench Hole

Determine mixer position considering the fitting reach and sink / vessel position(s). If not already provided, drill a 34-35mm hole through the sink or bench. Note that the maximum bench thickness allowance is 45mm.



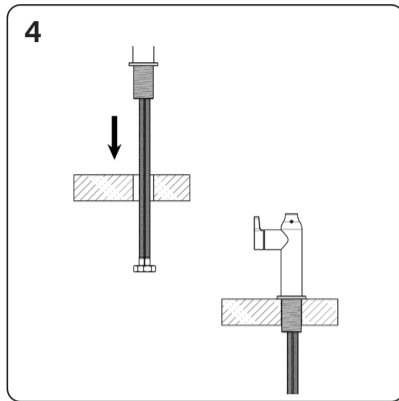
2 Connect the flexible hoses

Press the large O-ring into the base of the dress ring and screw the dress ring onto the mount sleeve approx. half way up. Slide the mount sleeve over the 2 flexi hoses. Thread the 2 flexi hoses into the base of the mixer and tighten by hand. The blue braided hose connects to the port marked "C" (or BLUE dot) and the red hose to the port marked "H" (or RED dot).



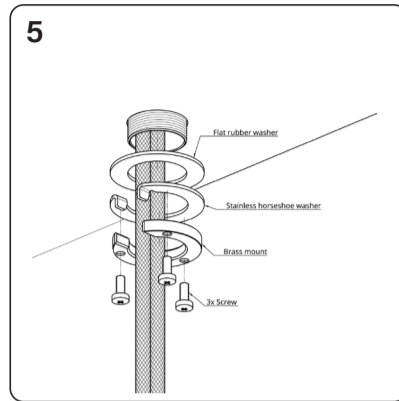
3 Install mount sleeve

With the hoses connected properly, screw the mount sleeve into the mixer body firmly by hand. Moisten the O-ring on the end of the mount sleeve (where it meets the mixer body) then screw the dress ring up until it touches the mixer body (the O-ring should now be engaged).



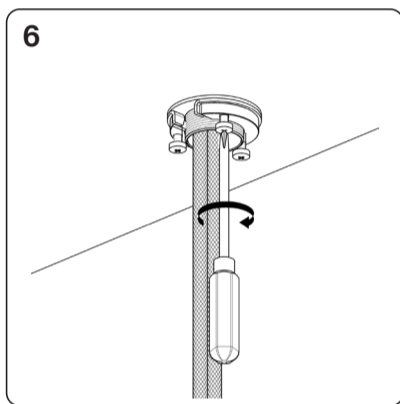
4 Place mixer into the hole

Bring the tap into position, press the flexible hose nuts through the tap hole and insert the mixer into the hole (if the hole is deep and does not permit both nuts to go through you can remove one hose and refit it once the tap is mounted)



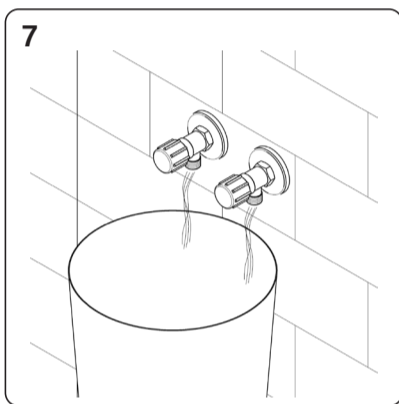
5 Install mount pieces

Insert the three Phillips head screws into one side of the brass mount nut (not to protrude through the other side) and locate the stainless horseshoe washer over the hoses and mount sleeve under the bench/sink then screw the mount nut onto the mount sleeve with the stainless washer to the top. Position the tap then hand tighten the brass mount nut.



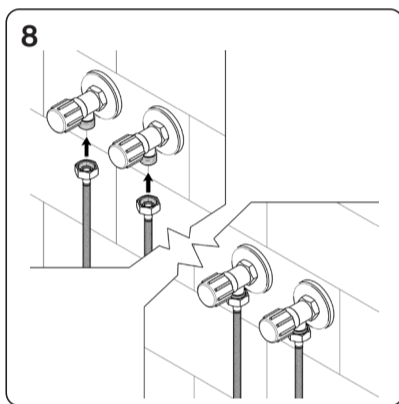
6 Fasten the tap in place

Using a Phillips screw driver, tighten the 3 screws to lock the fitting into place. Not a lot of force is required to secure the mixer firmly - do not overtighten.



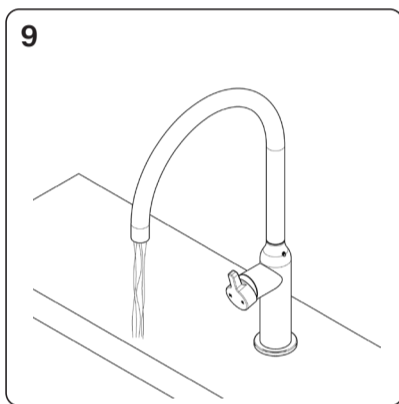
7 Flush pipes

Flush the water supply lines by running water through the supply points. We strongly recommend stoptaps are installed under the bench



8 Connect hoses

Connect the hoses to the water supply points / stop taps, Blue braid to the cold supply and red braid to the hot supply. Nip up gently with a spanner. Do not overtighten. Ensure flexi hoses are not twisted, stretched, or kinked.



9 Test product

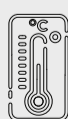
Open the handle of the mixer then slowly open the supply stop taps. Once the air has exited the tap you can close the tap handle. Run and operate the tap, and check everything is operating as expected. If there are any issues please contact Faucet Strommen before leaving the site.



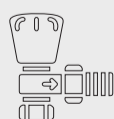
Must be fitted in accordance with AS/NZS 3500 by qualified plumber



Mains 500kpa regulator must be fitted



Maximum hot water temp. 65°C



Mini stop taps must be fitted



Water lines must be flushed prior to connection



Only clean municipal water supply. No bore, dam or hard water without filtration & treatment

**Cleaning**  
Clean only with a soft microfiber or similar cloth and warm clean water. Ensure that the cloth is clean and free of any grit or chemical. Dry tap off with a soft clean cloth. Ensure that your tap is not subject to any chemicals, building grit or any type of abrasive or polish. For care of special finishes please visit our website.

**Maintenance - Aerators**  
Aerators may need to be flushed from time to time if flow diminishes or stream pattern deteriorates. Use the aerator key provided to unscrew the aerator. You will notice a "castle" pattern around the edge of the aerator; the key engages with this allowing you to unscrew the insert easily. Rinse off the upper face of the insert with running water and gently brush clean with an old toothbrush to remove any debris before refitting the aerator.