

## Domaine Semi-Recessed - Material Colours and Finish Options

### CAST MARBLE

Consistent surface with minimal warping or imperfections.

Durable and stain resistant.

Easy to repair if scratched or chipped.



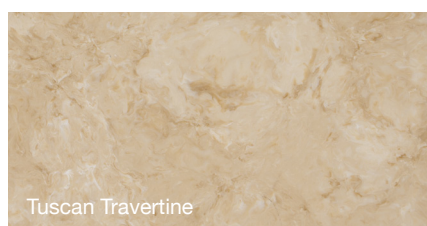
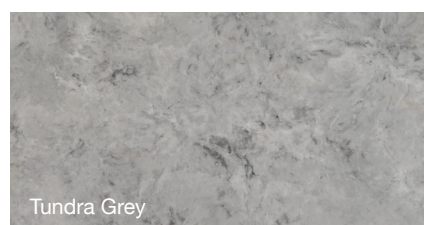
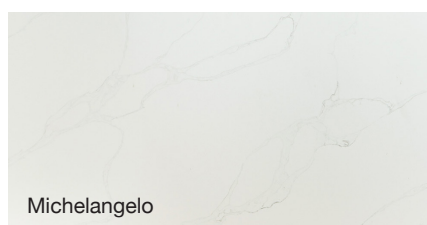
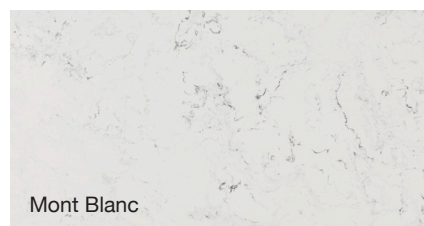
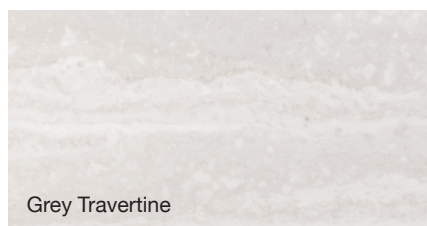
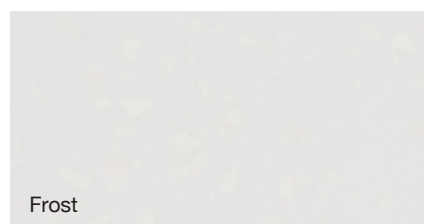
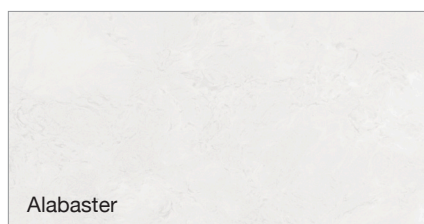
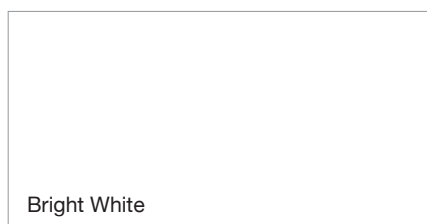
### CHERRY PIE - PREMIUM SOLID SURFACE 20mm

Manufactured using acrylic resin solid surface material.

Developed to withstand heat, chemicals, moisture, and impact, and to resist stains better than natural stone surfaces.

Non-porous, hygienic, easy to clean, maintain and repair.

**Cherry Pie is free of crystalline silica.**





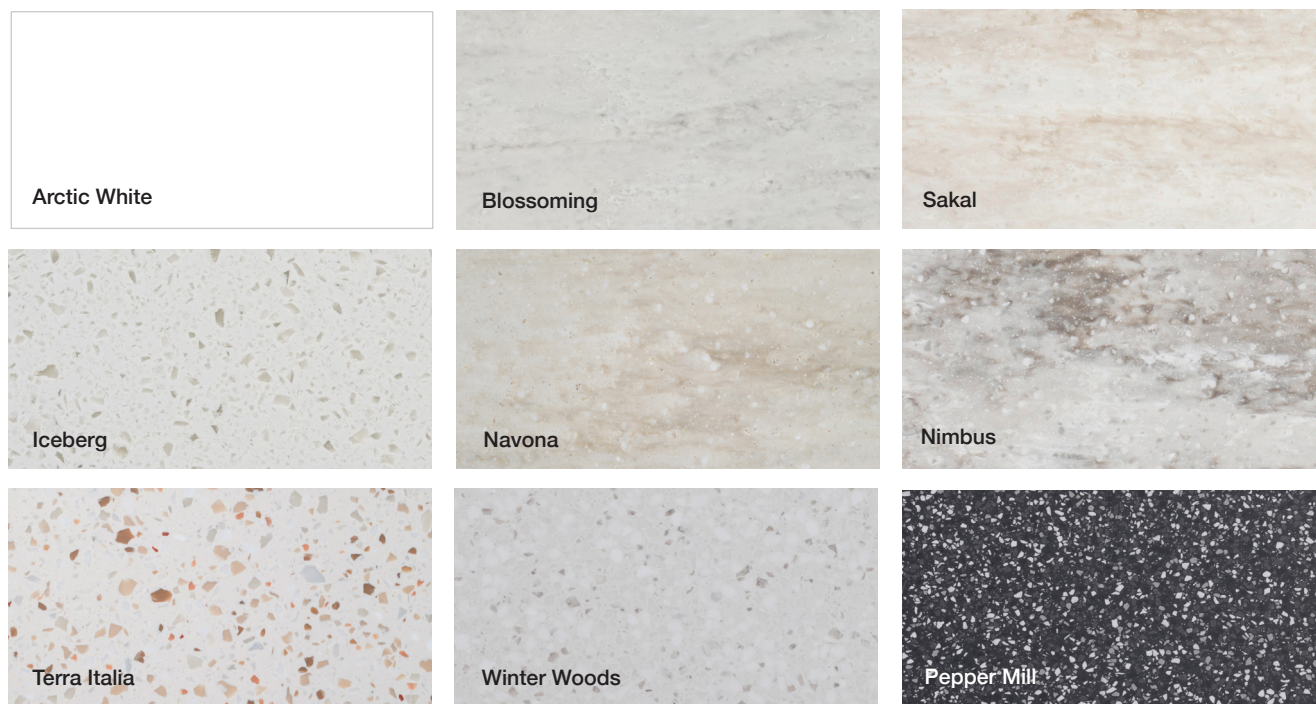
# Domaine Semi-Recessed - Material Colours and Finish Options

## DURASEIN - SOLID SURFACE 12mm / 50mm / 90mm

Manufactured using pure acrylic solid surface material.

Developed to withstand heat, chemicals, moisture, and impact, and to resist stains better than natural stone surfaces.

Non-porous, hygienic, easy to clean, maintain and repair.



## CAESARSTONE MINERAL - 20mm / 50mm / 90mm (Only available on Plus Models)

One of Australia's most recognised brands in benchtop surfaces, Caesarstone's Mineral collection is formulated with a unique blend of materials.

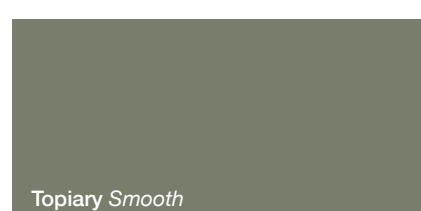
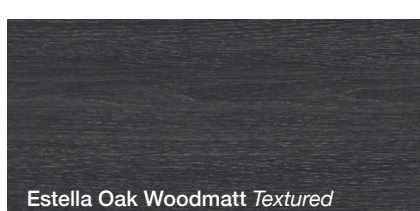
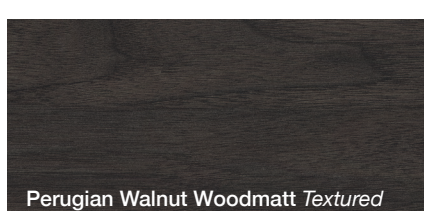
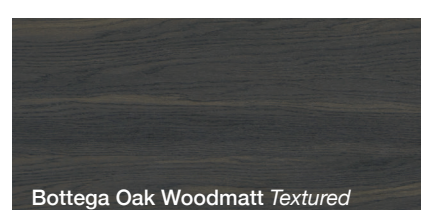
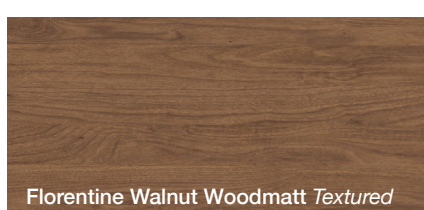
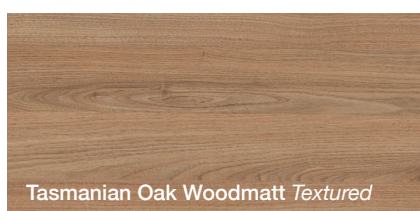
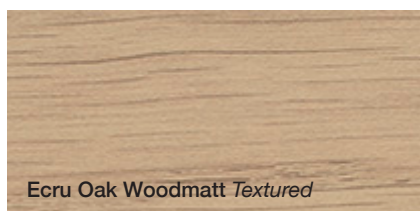
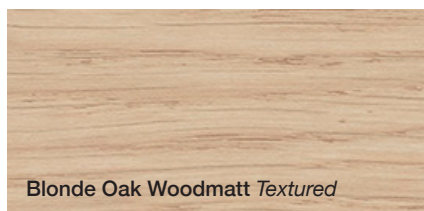
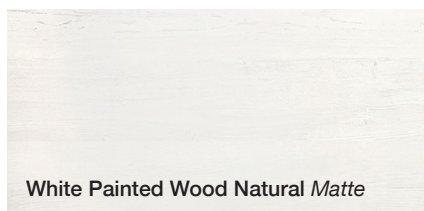
Caesarstone Mineral is free of Crystalline Silica.





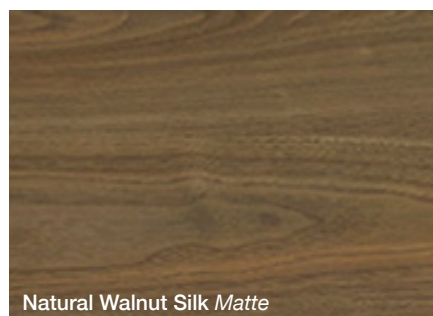
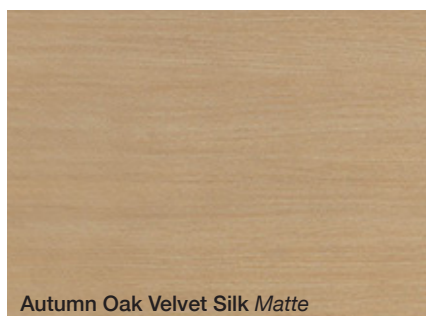
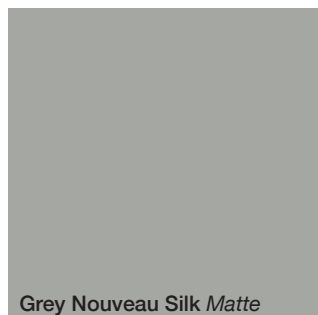
# Domaine Semi-Recessed - Material Colours

## TEXTURED WOODGRAIN & SMOOTH FINISHES



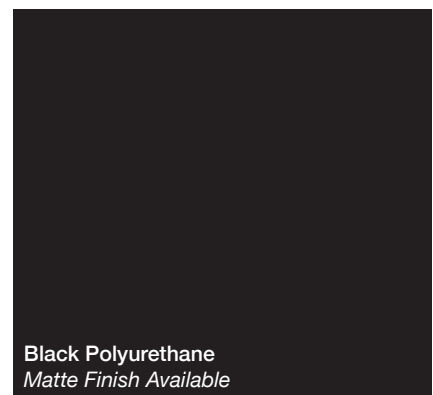
## Domaine Semi-Recessed - Material Colours

### SILK FINISHES



### POLYURETHANE FINISH (AVAILABLE ON PLUS MODELS ONLY)

Special Polyurethane colours available (fees apply). *Please note no custom polyurethane colours available on Shelf models.*





# Domaine Semi-Recessed - Material Colours and Finish Options

## BEVEL-GRIP FINGER PULL (Available on Standard & Plus Models)



## ADP STANDARD HANDLE OPTIONS AND FINISHES (Available on Standard & Plus Models)

### Aura

Available in Chrome  
Projection 29mm

Hole centres  
96mm  
224mm



### Round Cross Bar

Available in Matte White, Chrome, Brushed Nickel, Matte Black, Polished Rose Gold

Projection 33mm  
Hole centres  
96mm  
224mm  
544mm



### Bridge

Available in Chrome  
Projection 30mm

Hole centres  
96mm  
224mm



### Link

Available in Chrome  
Projection 30mm

Hole centres  
224mm



### Flat-D

Available in Chrome  
Projection 28mm

Hole centres  
96mm  
224mm



### Plus

Available in Chrome  
Projection 25mm

Hole centres  
224mm



### Sydney

Available in Chrome  
Projection 28mm

Hole centres  
96mm  
224mm



### Orbit

Available in Matte White, Chrome, Matte Black

Projection 34mm  
Hole centres  
224mm



### Classic Knob

Available in Chrome, Matte Black  
Projection 30mm



### Seashell

Available in Chrome, Brushed Nickel, Matte Black, Light Brushed Brass  
Projection 23mm



## Domaine Semi-Recessed - Material Colours and Finish Options

### ADP PREMIUM HANDLE OPTIONS AND FINISHES

(Included on Plus Models and Available to Upgrade on Standard Models)

#### Blaze 60mm

Available in Matte White, Brushed Nickel, Matte Black, Brushed Brass, Brushed Copper, Brushed Gunmetal

Projection 21mm



#### Blaze 350mm

Available in Matte White, Brushed Nickel, Matte Black, Brushed Brass, Brushed Copper, Brushed Gunmetal

Projection 21mm

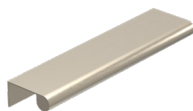


#### Francis

Available in Matte White, Brushed Nickel, Matte Black, Brushed Brass, Brushed Copper, Brushed Gunmetal

Projection 49mm

Hole Centres 170mm

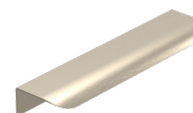


#### Aria

Available in Matte White, Brushed Nickel, Matte Black, Brushed Brass, Brushed Copper, Brushed Gunmetal

Projection 45mm

Hole Centres 170mm



#### Stirling

Available in Matte White, Brushed Nickel, Matte Black, Brushed Brass, Brushed Copper, Brushed Gunmetal

Projection 28mm

Hole centres

128mm

192mm



#### Ripple

Available in Matte White, Brushed Nickel, Matte Black, Chrome Brushed Brass, Brushed Copper, Brushed Gunmetal

Projection 29mm

Hole Centres 192mm



#### Fluted

Available in Brushed Nickel, Matte Black, Light Brushed Brass

Projection 27mm

Hole Centres 128mm



#### Bridge

Available in Matte White, Brushed Nickel, Matte Black, Brushed Brass, Brushed Copper, Brushed Gunmetal

Projection 30mm

Hole Centres 160mm



#### Fringe

Available in Matte Black

Projection 30mm

Hole Centres 160mm

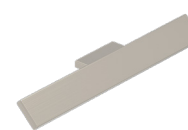


#### Hammer

Available in Chrome, Brushed Nickel, Matte Black, Light Brushed Brass

Projection 25mm

Hole Centres 32mm





# Domaine Semi-Recessed - Material Colours and Finish Options

## ADP PREMIUM HANDLE OPTIONS AND FINISHES (Included on Plus Models and Available to Upgrade on Standard Models)

### Elwood

Available in Matte White, Brushed Nickel, Matte Black, Brushed Brass, Brushed Copper, Brushed Gunmetal

Projection 36mm  
Hole Centres 192mm



### Elwood Knob

Available in Matte White, Brushed Nickel, Matte Black, Brushed Brass, Brushed Copper, Brushed Gunmetal

Projection 36mm  
Width 51mm



### Cooper Knob

Available in Matte White, Brushed Nickel, Matte Black, Brushed Brass, Brushed Copper, Brushed Gunmetal

Projection 30mm  
Diameter 38mm



### Cushion Knob

Available in Matte White, Brushed Nickel, Matte Black, Chrome, Brushed Brass, Brushed Copper, Brushed Gunmetal

Projection 26mm  
Width 30mm



### Point Knob

Available in Brushed Nickel, Matte Black, Light Brushed Brass

Projection 25mm  
Diameter 28mm



### Reign Knob

Available in Matte Black, Brushed Brass

Projection 30mm



### Loop Leather Pull

Available in Black or Tan  
Length 70mm



### Eden

Available in all Durasein Solid Surface finishes (see page 2)

Projection 30mm



### Vale Knob

Available in all Durasein Solid Surface finishes (see page 2)

Projection 30mm

