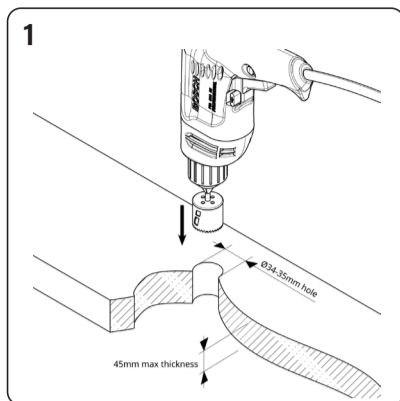


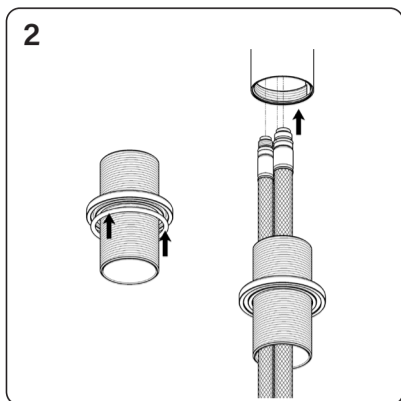


VARA Pull Out Mixer



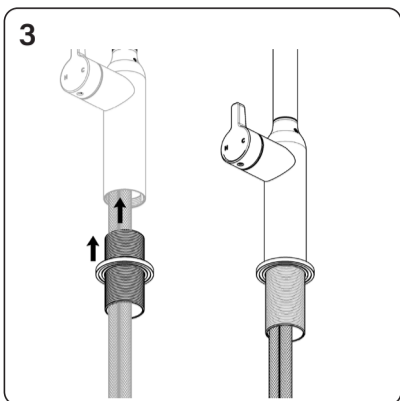
1 Drill Bench Hole

Determine mixer position considering the fitting reach and sink / vessel position(s). If not already provided, drill a 34-35mm hole through the sink or bench. Note that the maximum bench thickness allowance is 45mm. Ensure that there is sufficient unobstructed space below the sink hole to allow for the correct functioning of the pull-out hose (600mm from underside of bench).



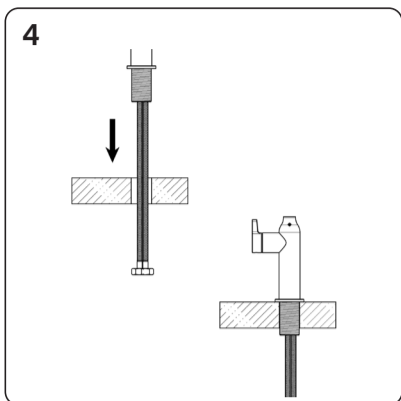
2 Connect the flexible hoses

Press the large O-ring into the base of the dress ring and screw the dress ring onto the mount sleeve approx. half way down. Slide the mount sleeve over the 3 flexi hoses. Thread the 3 flexi hoses into the base of the mixer and tighten by hand. The blue braided hose connects to the port marked "C" (or BLUE dot), the red hose to the port marked "H" (or RED dot), and the neutral hose into the unmarked port (between the Red and Blue hoses).



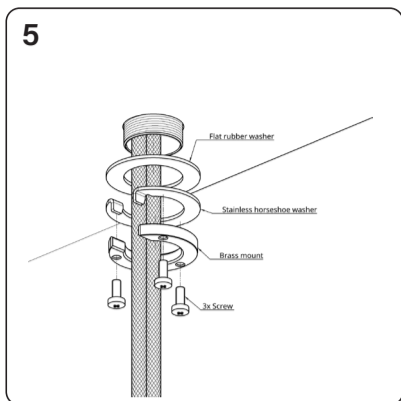
3 Install mount sleeve

With the hoses connected properly, screw the mount sleeve into the mixer body firmly by hand. Moisten the O-ring on the end of the mount sleeve (where it meets the mixer body) then screw the dress ring up until it touches the mixer body (the O-ring should now be engaged).



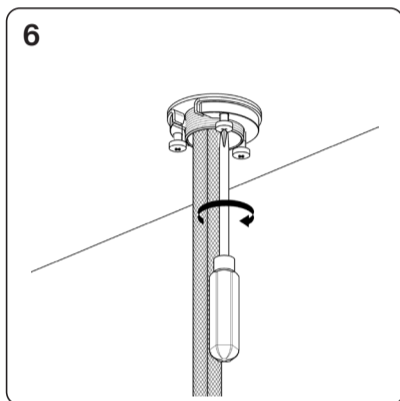
4 Place mixer into the hole

Bring the tap into position, press the flexible hose nuts through the tap hole and insert the mixer into the hole (if the hole is deep and does not permit both nuts to go through you can remove one hose and refit it once the tap is mounted)



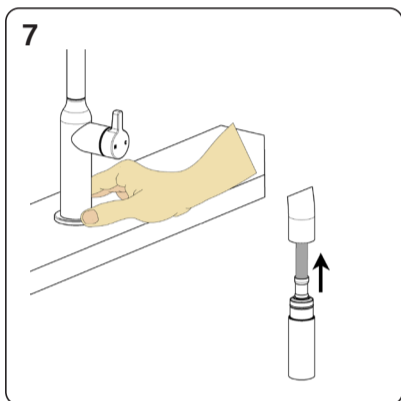
5 Install mount pieces

Insert the three Phillips head screws into one side of the brass mount nut (not to protrude through the other side) and locate the stainless horseshoe washer over the hoses and mount sleeve under the bench/sink then screw the mount nut onto the mount sleeve with the stainless washer to the top. Position the tap then hand tighten the brass mount nut.



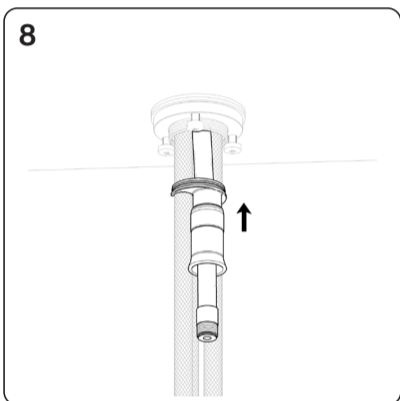
6 Fasten the tap in place

Using a Phillips screw driver, tighten the 3 screws to lock the fitting into place. Not a lot of force is required to secure the mixer firmly - do not overtighten.



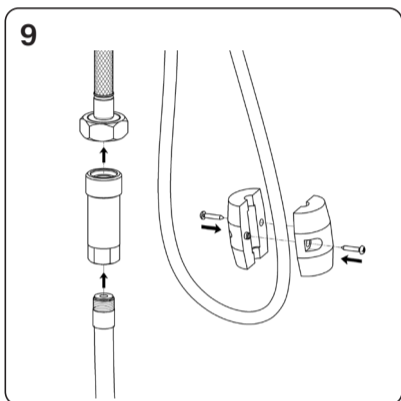
7 Feed pull-out hose through body

Check that the tap feels firm and is sitting straight and flat on the sink or benchtop. Carefully unpack the pull-out hose with the head attachment on it and feed through the mixer starting from the spout end.



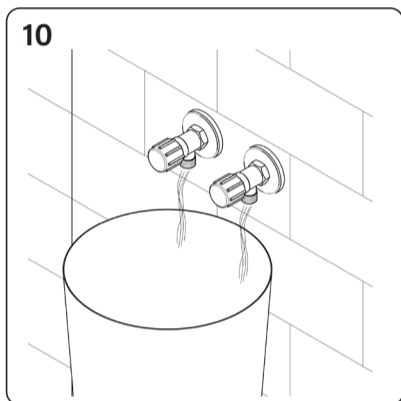
8 Assemble hose guide

Feed the end of the pull-out hose through the hose guide, then click it in position inside the mount sleeve



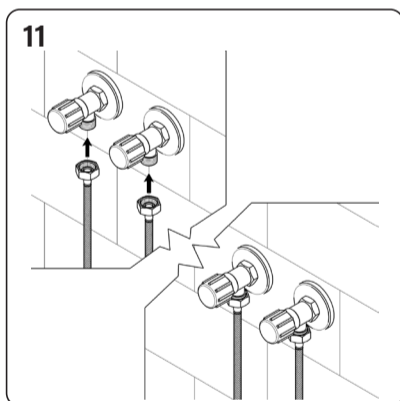
9 Connect pull-out hose

Connect the end of the pull-out hose to the female end of the check-valve body and tighten firmly by hand. Connect the male end of the check-valve body to the short flexi hose, and nip up gently with a spanner. Attach the plastic weight just above the lowest point of the pull-out hose (on the side that retracts into the mixer).



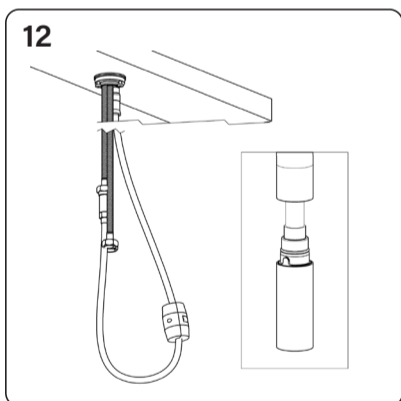
10 Flush pipes

Flush the water supply lines by running water through the mini supply stop taps into a bucket.



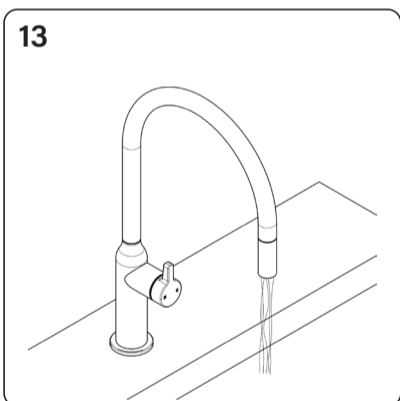
11 Connect hoses

Connect the hoses to the water supply points / stop taps, Blue braided to the cold supply and red braided to the hot supply. Nip up gently with a spanner. Do not overtighten. Ensure flexi hoses are not twisted, stretched, or kinked.



12 Inspect/test pull-out action

Inspect the path of the pull-out hose under the sink and ensure that it is clear of obstructions. You may need to use saddles or ties to hold the flexi hoses to ensure they do not interfere with the pull-out hosepath. Test the pull-out action and confirm that it is not hooking or grinding on anything under the sink. On the pull-out end there is a small protrusion which engages into a cut-away inside the spout. If this is naturally mis-aligning, you can correct this by loosening the nut on the short flexi and rotating the checkvalve + hose until it is in the right position.



13 Test product

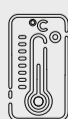
Open the handle of the mixer then slowly open the supply stop taps. Once the air has exited the tap you can close the tap handle. Run and operate the tap, check for any leaks or issues. If you have any concerns contact Faucet Strommen before leaving the site.



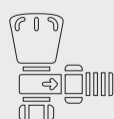
Must be fitted in accordance with AS/NZS 3500 by qualified plumber



Mains 500kpa regulator must be fitted



Maximum hot water temp. 65°C



Mini stop taps must be fitted



Water lines must be flushed prior to connection



Only clean municipal water supply. No bore, dam or hard water without filtration & treatment

Cleaning
Clean only with a soft microfiber or similar cloth and warm clean water. Ensure that the cloth is clean and free of any grit or chemical. Dry tap off with a soft clean cloth. Ensure that your tap is not subject to any chemicals, building grit or any type of abrasive or polish. For care of special finishes please visit our website.

Maintenance - Aerators
Aerators may need to be flushed from time to time if flow diminishes or stream pattern deteriorates. Use the aerator key provided to unscrew the aerator. You will notice a "castle" pattern around the edge of the aerator; the key engages with this allowing you to unscrew the insert easily. Rinse off the upper face of the insert with running water and gently brush clean with an old toothbrush to remove any debris before refitting the aerator.

Contact Faucet Strommen for any technical assistance on installations

03 5450 4236

customerservice@faucetstrommen.com.au

